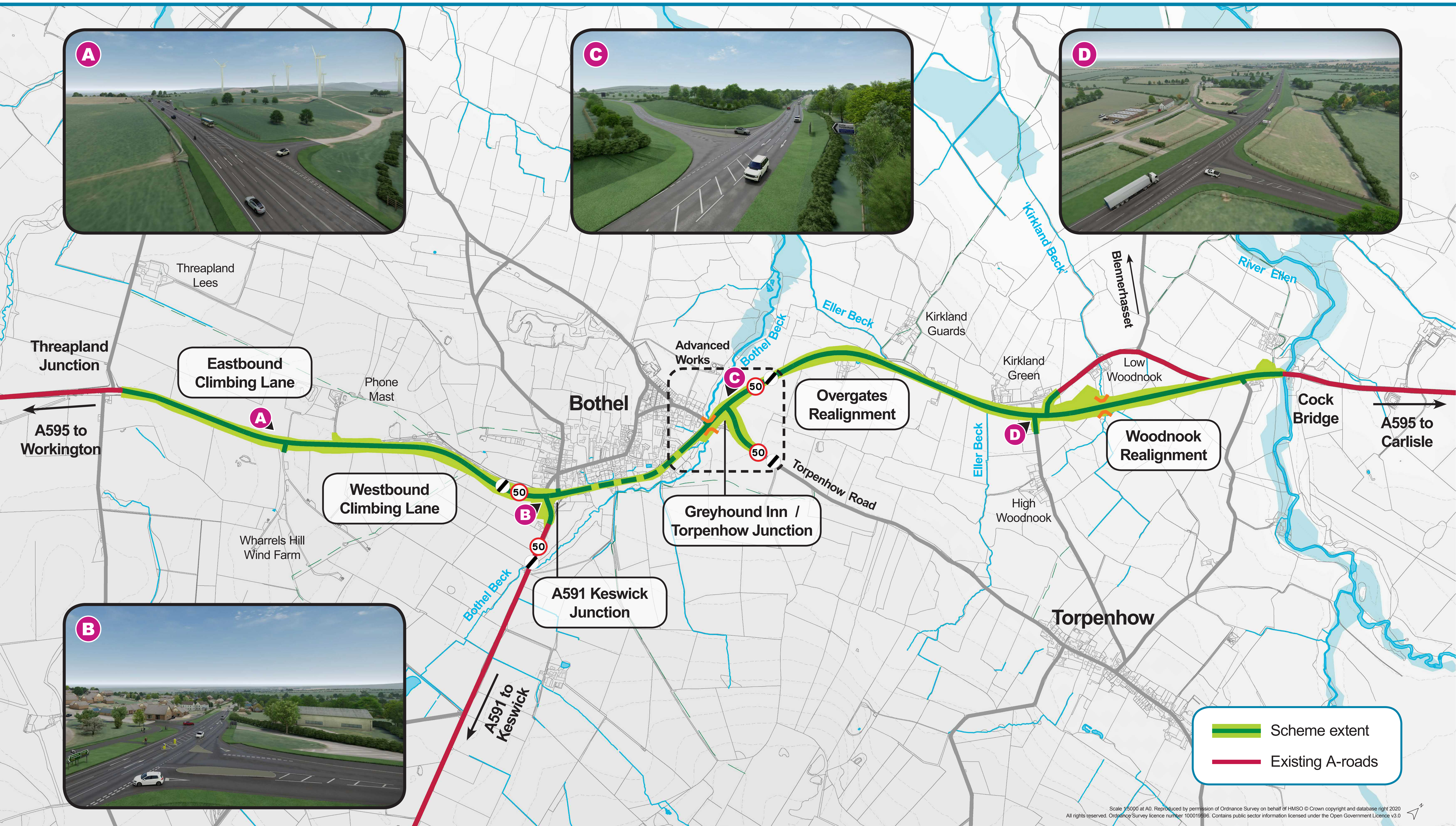
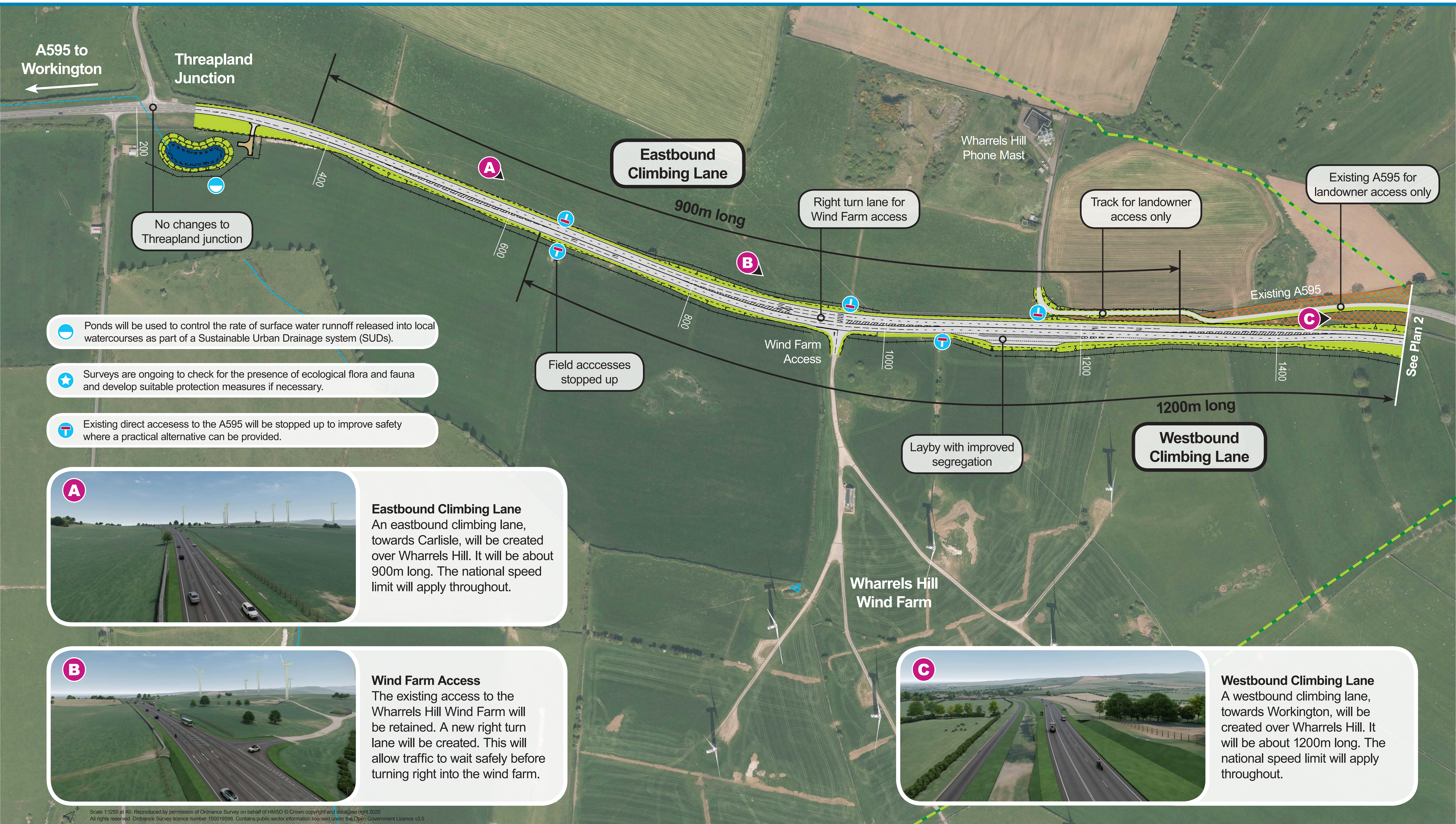


A595 Bothel Strategic Improvement: Overview



A595 Bothel Strategic Improvement: Plan 1



- Ponds will be used to control the rate of surface water runoff released into local watercourses as part of a Sustainable Urban Drainage system (SUDs).
- Surveys are ongoing to check for the presence of ecological flora and fauna and develop suitable protection measures if necessary.
- Existing direct accesses to the A595 will be stopped up to improve safety where a practical alternative can be provided.

A

Eastbound Climbing Lane
An eastbound climbing lane, towards Carlisle, will be created over Wharrels Hill. It will be about 900m long. The national speed limit will apply throughout.

B

Wind Farm Access
The existing access to the Wharrels Hill Wind Farm will be retained. A new right turn lane will be created. This will allow traffic to wait safely before turning right into the wind farm.

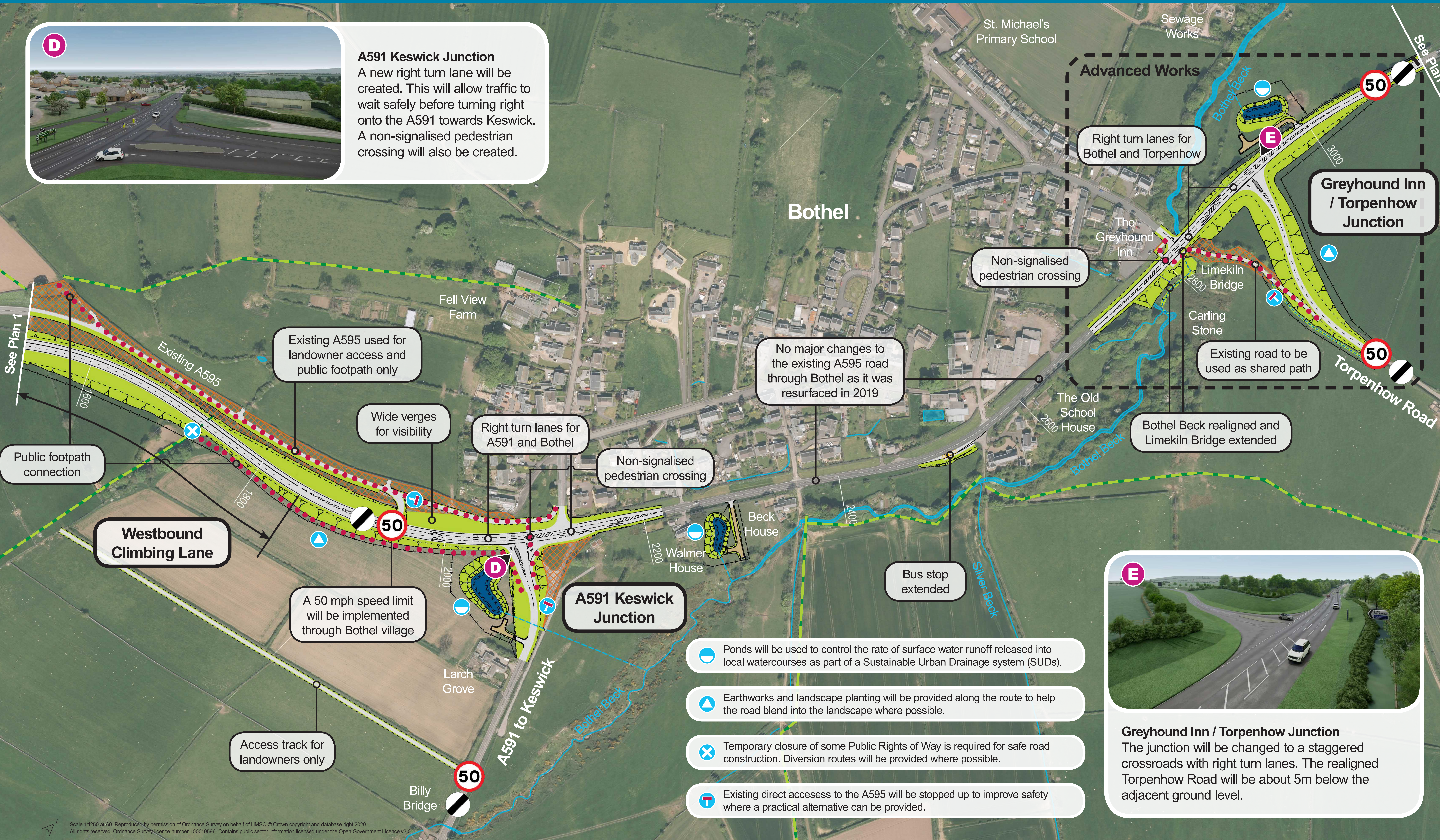
C

Westbound Climbing Lane
A westbound climbing lane, towards Workington, will be created over Wharrels Hill. It will be about 1200m long. The national speed limit will apply throughout.

A595 Bothel Strategic Improvement: Plan 2



A591 Keswick Junction
A new right turn lane will be created. This will allow traffic to wait safely before turning right onto the A591 towards Keswick. A non-signalised pedestrian crossing will also be created.

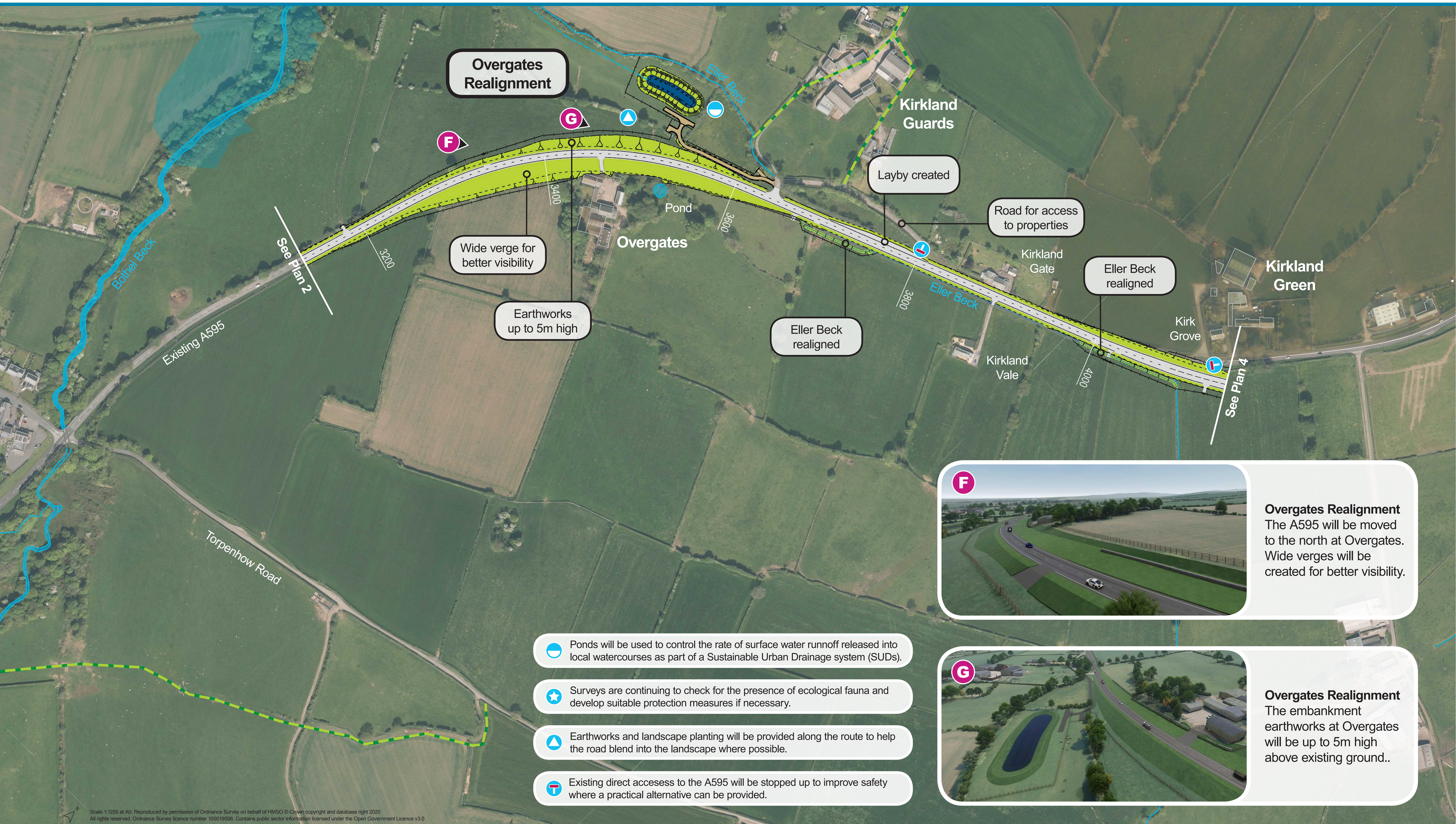


Greyhound Inn / Torpenhow Junction
The junction will be changed to a staggered crossroads with right turn lanes. The realigned Torpenhow Road will be about 5m below the adjacent ground level.

- Ponds will be used to control the rate of surface water runoff released into local watercourses as part of a Sustainable Urban Drainage system (SUDs).
- Earthworks and landscape planting will be provided along the route to help the road blend into the landscape where possible.
- Temporary closure of some Public Rights of Way is required for safe road construction. Diversion routes will be provided where possible.
- Existing direct accesses to the A595 will be stopped up to improve safety where a practical alternative can be provided.

Scale 1:1250 at A0. Reproduced by permission of Ordnance Survey on behalf of HMSO © Crown copyright and database right 2020. All rights reserved. Ordnance Survey licence number 100019596. Contains public sector information licensed under the Open Government Licence v3.0.

A595 Bothel Strategic Improvement: Plan 3



F

Overgates Realignment
The A595 will be moved to the north at Overgates. Wide verges will be created for better visibility.

G

Overgates Realignment
The embankment earthworks at Overgates will be up to 5m high above existing ground..

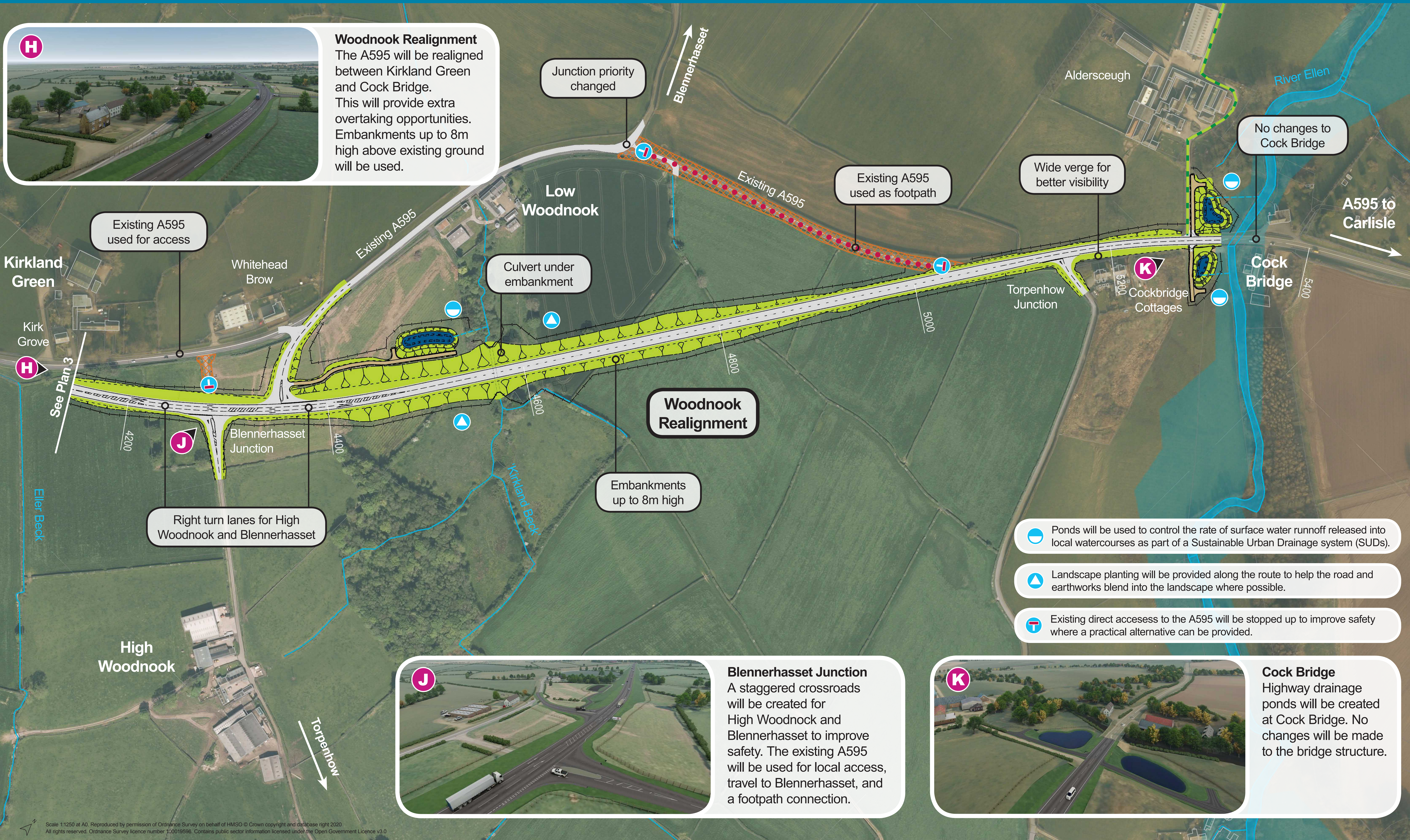
- Ponds will be used to control the rate of surface water runoff released into local watercourses as part of a Sustainable Urban Drainage system (SUDs).
- Surveys are continuing to check for the presence of ecological fauna and develop suitable protection measures if necessary.
- Earthworks and landscape planting will be provided along the route to help the road blend into the landscape where possible.
- Existing direct accesses to the A595 will be stopped up to improve safety where a practical alternative can be provided.

Scale 1:1250 at A0. Reproduced by permission of Ordnance Survey on behalf of HMSO © Crown copyright and database right 2020. All rights reserved. Ordnance Survey licence number 100019596. Contains public sector information licensed under the Open Government Licence v3.0

A595 Bothel Strategic Improvement: Plan 4



Woodnook Realignment
The A595 will be realigned between Kirkland Green and Cock Bridge. This will provide extra overtaking opportunities. Embankments up to 8m high above existing ground will be used.



Right turn lanes for High Woodnook and Blennerhasset

Embankments up to 8m high

🌊 Ponds will be used to control the rate of surface water runoff released into local watercourses as part of a Sustainable Urban Drainage system (SUDs).

🌳 Landscape planting will be provided along the route to help the road and earthworks blend into the landscape where possible.

🚫 Existing direct accesses to the A595 will be stopped up to improve safety where a practical alternative can be provided.



Blennerhasset Junction
A staggered crossroads will be created for High Woodnook and Blennerhasset to improve safety. The existing A595 will be used for local access, travel to Blennerhasset, and a footpath connection.



Cock Bridge
Highway drainage ponds will be created at Cock Bridge. No changes will be made to the bridge structure.

Scale 1:1250 at A0. Reproduced by permission of Ordnance Survey on behalf of HMSO © Crown copyright and database right 2020. All rights reserved. Ordnance Survey licence number 100019596. Contains public sector information licensed under the Open Government Licence v3.0

A595 Bothel Strategic Improvement: Details and Key

